

MAJESTIC

BT 3280R MP4



INSTRUCTION MANUAL

New Majestic SPA

Via Rossi Martini 41, 26013 Crema

(CR) www.newmajestic.com

MADE IN CHINA



SAFETY WARNINGS

For safe use and maximum performance, please read this manual carefully before use.

CAUTION: TO REDUCE THE RISK OF ELECTRIC SHOCK, DO NOT DISASSEMBLE THE APPLIANCE. THERE ARE NO USER SERVICEABLE PARTS. FOR REPAIRS CONTACT QUALIFIED TECHNICAL STAFF.

To avoid the danger of electric shock or fire, do not expose to rain or moisture.



DANGEROUS VOLTAGE!



The symbol to the side warns the user of the presence of voltage that could not be isolated and may cause electric shock .



This symbol warns the user that before using the unit, it is necessary to carefully read the instruction booklet.

IMPORTANT NOTES

- The use must be allowed only to adults and responsible persons,

adequately educated on the damages deriving from incorrect use.

- This appliance can be used by children aged 8 and over if they are under supervision or if they have received instructions regarding the safe use of the appliance and if they understand the dangers.

involved. Cleaning and maintenance operations by the user must not be carried out by children unless they are over 8 years of age and operate under supervision. Keep the appliance and its cord out of the reach of children under the age of 8.

- The devices can be used by people with reduced physical, sensory or mental abilities or with a lack of experience and knowledge if they are supervised or if they have received instructions regarding the safe use of the appliance and understand the dangers involved.
- Children must not use the appliance as a game.
- Do not allow the appliance to be used by children or the disabled without supervision
- Keep away from pets
- Never use the appliance in places where the cord, plug and the product itself may come into contact with water or wet surfaces. Do not use the appliance outdoors, as rain could create short circuits. Do not touch the appliance with wet hands.
- Avoid installing the unit in the locations listed below:
 - Places exposed to direct sunlight or close to equipment that generate

heat, such as radiators;

- Above other stereo equipment that may radiate excessive heat;
- Places that block ventilation or are humid or dusty;
- Environments subject to constant vibration;
- Do not place accessories with naked flames, such as lighted candles, on the appliance.
- Do not try to repair or intervene on the appliance yourself. Incorrect interventions or tampering can void the guarantee. In the event of any damaged parts or suspected malfunction, discontinue use immediately and consult qualified personnel. Never immerse the appliance in water or other liquids. Do not place items containing liquids (such as vases) on top of the appliance.
- Do not touch the appliance with wet hands and do not place it near sinks, tubs or containers of liquids.

Use the product only if it is in perfect condition. If the appliance has been immersed in water or is damaged, contact qualified personnel.

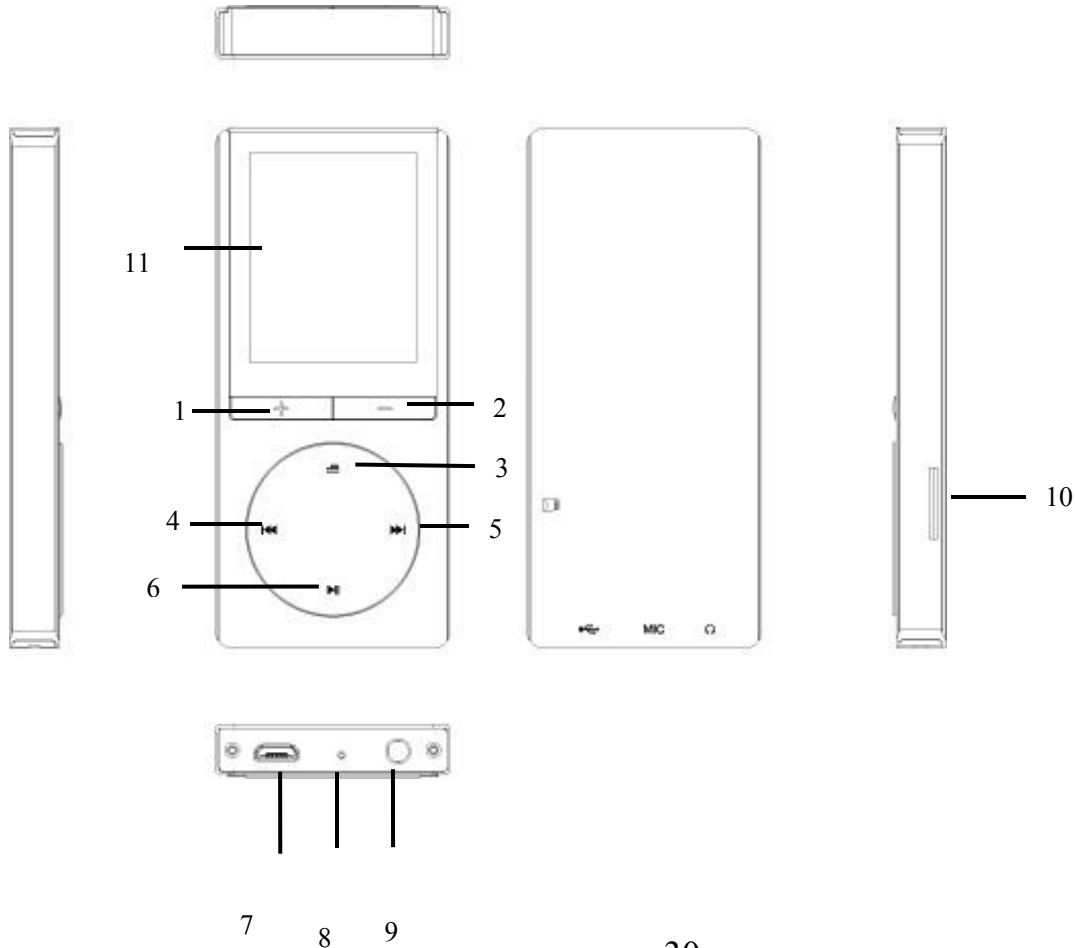
- The product should not be used if it has been dropped or if there are any visible signs of damage.
- Exposure to high volume levels can cause hearing problems, including permanent damage. The predisposition to hearing loss varies from person to person, however constant exposure to high volume levels is harmful to anyone. Moderate the volume level.

-Thank you for purchasing our digital MP3 player. Before you use this player, please read through this manual book, so you can operate it correctly.

Caution

- 1) Avoid using MP3 player in a very cold or hot place.
- 2) Do not put the MP3 player in the water.
- 3) Do not knock or beat the MP3 player
- 4) Do not use the MP3 player during driving or riding a bike
- 5) Please do not open the MP3 player by yourself if you are not professional people.

Description of the parts



1	VOL+	Volume increase
2	VOL-	Volume decrease
3	OPTIONS	Press to exit from menu/Keep pressed to display the options (when available)
4	PRE	Previous song / scrolling menu / long press during playback to rewind.
5	NEXT	Next song / scrolling menu / long press during playback to fast forward.
6	PLAY	Play / Pause / confirm/long press to turn on/off
7	microUSB port	
8	Microphone	
9	Phone jack	Jack 3.5mm to insert earphones.
10	microSD slot	All files are stored and played from microSD card, if the card is not inserted it will not be possible to start music playback.
11	Display	

DISPLAY

	1	Bitrate
	2	Track elapsed time
	3	Playback status (Play/Pause)
	4	Played track name
	5	Track total time
	6	EQ
	7	Playback mode
	8	Cover
	9	Battery status
	11	Total tracks number
	10	Played track number

Tracks insertion by computer

This player uses a microSD card.

When the unit is OFF insert a microSD card in the slot on the side of the unit, then connect the MP3 player to the USB port of your PC, by using supplied USB cable.

After windows have installed the player you will find it under computer as removable USB.

Copy your files from the computer into this MP3 player.

When transfer is complete you can disconnect the unit from PC and remove the USB cable.

Note: during computer connection the battery will be charged.

It is possible to use the player during charging by pressing OPTIONS button after connected to power source. By using the player during charge it is not possible to find it under computer as removable USB.

TURN ON/OFF AND VOLUME ADJUSTMENT

To turn on the unit long press PLAY button until the logo appears on screen.

To turn off the unit long press PLAY button until the logo disappears on screen.

To decrease or increase volume press VOL- or VOL+.

MAIN MENU

After turning on the unit main menu will be displayed with 9 functions (Music, Bluetooth ®, Pictures, Folder, Video, Recording, Stopwatch, Settings and Documents).

By using PRE/NEXT buttons it is possible to move to the desired function.

Pressing PLAY it will start the desired function. When a function is open it is possible to press OPTIONS key to go back to previous menu or long press OPTIONS key to display settings.

MUSIC

Please insert earphones in the slot, then push power switch to **ON** state, select music menu.

After choosing the mode between All tracks, Artist, Album, Genre or Playlist, select desired track and press PLAY to start playback.

Long press OPTIONS key during playback to set playback mode (Not repeat/Repeat 1/Repeat all/Shuffle), modify EQ settings (choose between Normal/Rock/Funk/Hip Hop/Jazz/Classic/Techno/Custom, and playback speed adjustment) add or remove the track to one of the available playlist and delete track from microSD.

During playback it is possible to press PLAY key to pause. Press PRE/NEXT to switch to previous/next track.

During playback long press PRE/NEXT to rewind/fast forward inside the track.

To exit music mode press OPTIONS key many times.

BLUETOOTH

Bluetooth option allows to connect Bluetooth audio devices. Verify that

the device we want to pair is set as “visible from other devices” and that Bluetooth is ON, then enter Bluetooth menu of the player, turn on Bluetooth from menu “Bluetooth status” and start searching for device by “Search” option. After having detected the device select it pressing PLAY and choose “pair device”.

To start playback choose “All tracks”, browse files from microSD and select the desired track.

NOTE: in Bluetooth mode it is possible to play only WAV, WMA, APE, FLAC, MP3 formats.

NOTE: in Bluetooth mode it is not possible to view and play Playlist.

NOTE: it is not guarantee the compatibility with all Bluetooth audio devices.

PICTURE

In picture mode it allows to play JPEG/BMP/GIF files saved in the microSD card. Select the file by PRE/NEXT keys from the list of compatible files and confirm with PLAY. Pressing PLAY it is possible to start/stop slideshow. Keep pressing OPTIONS key during picture display it is possible to change display brightness, manage slideshow options and delete pictures. To exit press OPTIONS key many times until it shows main menu.

FOLDER

By this mode it is possible to browse the folders inside memory card and

start playback of the compatible files.

VIDEO

Video mode allows to play video file in AMV format. After opening Video it is possible to select desired file by PRE/NEXT keys from the list of compatible files and confirm with PLAY key. During video file playback press PRE/NEXT to switch to previous/next file. Keep pressing OPTIONS during video playback it is possible to adjust display brightness, manage repeat options, delete selected file and update files list.

Rewind and fast forward: during playback long press PRE/NEXT to rewind/fast forward the video.

To exit press OPTIONS button many times until main menu will appear.

NOTE: the player is able to play only video in AMV format converted by software AmvTransform.

Transform video file to AMV format

AmvTransform (you can find on microSD card supplied) is used to convert video files to AMV format.

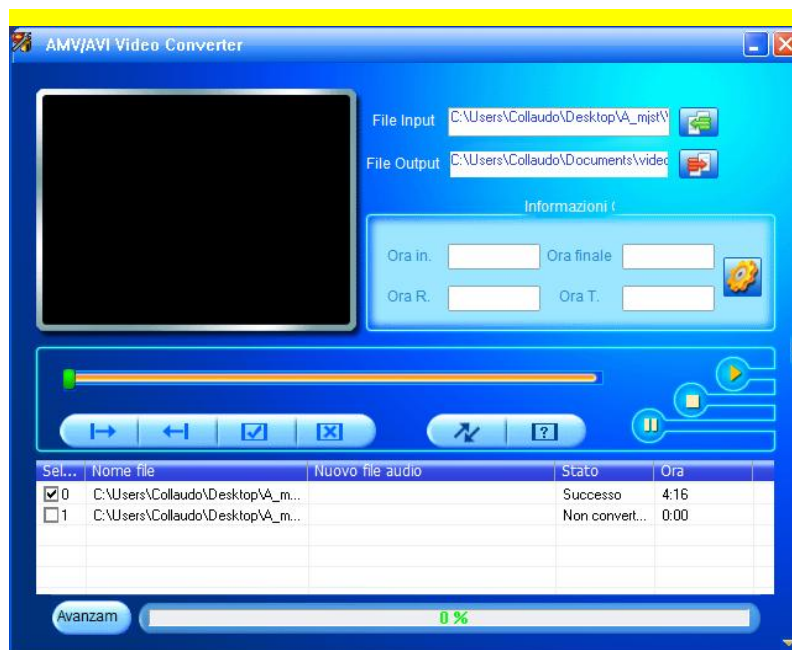
By this program it is possible to convert the following files:



- AVI container (.avi)
- Windows media (.asf, .wmv, .wma)


- MPEG 1 (.mpg, .mpeg, .dat)
- Real Player (.rm)
- Quicktime (.mov)
- MPEG 2 (.vob)

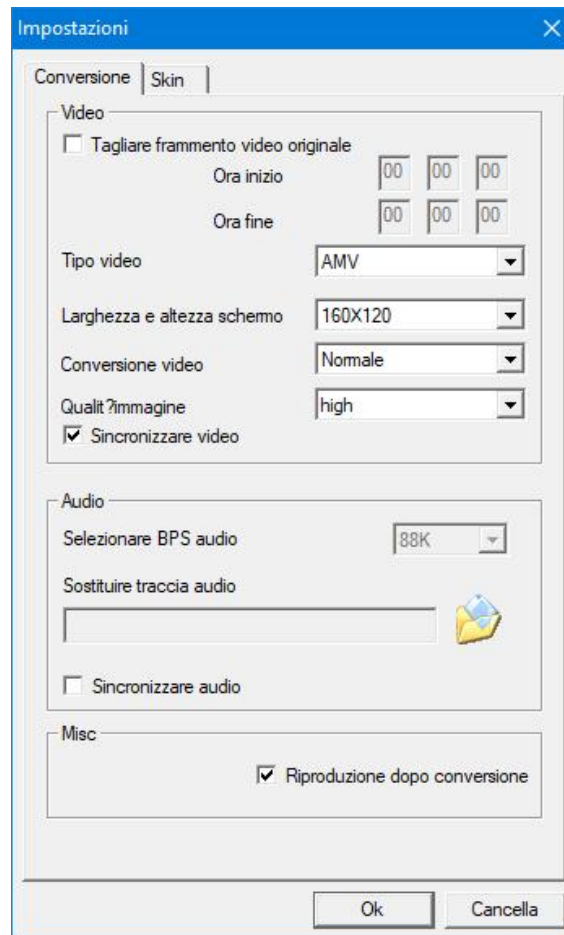
NOTE: for some formats conversion it is necessary to install the related codec (ex. Quicktime© for “.mov” or DivX Codec© for some “.avi”).


AmvTransform installation: after having connected the player to computer open the folder “Video Converter” inside the memory card and execute the file “Setup.exe” to start program installation. At the end of installation open “AmvTransform”.



- Click  to choose the path where to save AMV file, then click  to choose the file to convert.

- To modify file setting you want to get select it (by clicking on it) and click the icon . A pop up will be shown in which it is possible to choose AMV file settings. Press OK to confirm.



- Click  to start conversion.
- At the end of conversion the video will be automatically played.

STOPWATCH

Press PLAY to start/stop stopwatch. It is possible to save partial time by NEXT/PREV buttons. To reset stopwatch and go back to main menu press OPTIONS key.

RECORDING

By this function it is possible to record vocal notes in MP3/WAV format.

To start recording choose “Start recording”. To pause or restart recording press PLAY. To store the recording press OPTIONS key and confirm. The recorded file will be saved in the folder RECORD.

After starting recording function it is possible to view the list of recordings done and choose the format (WAV/MP3) and bitrate.

To exit recording mode press OPTIONS key until it shows main menu.

SETTINGS

By this menu, selectable from main screen, it is possible to modify the unit settings. Select desired option with PRE/NEXT keys and confirm with PLAY key.

To exit settings press OPTIONS key until it shows main menu.

Max volume limit	It allows to set a limit beyond which the volume cannot be increased further
Display	Brightness: allows to adjust the brightness level of display
	Turn off: allows to set the time after which display can turn off automatically if no key is pressed (“always on” option allows to keep display always

	on)
Energy saving	allows to set the time after that the player will be off automatically if not in use (set OFF to turn off the function)
Turn off timer	Allows to set a timer (from 1 to 99 minutes) to make the unit turn off automatically (choose OFF to turn off the function). The function will be automatically disabled by turning off the unit.
Language	Chinese/English/German/Italian
Info	Display the status of microSD card
	Display the firmware information
Format	Allows to format microSD card
Restore to factory settings	Restore the unit to factory settings

Documents

By this function it is possible to view text files in TXT format.

Battery charging

The player has a built-in rechargeable battery which can be charged by using USB cable connecting to PC. The charging status of the battery will be shown on display. To charge the unit turn on the PC and connect to it by

using the supplied USB cable. The player should charge completely in about 4/5 hours (the charging time depends on the battery charging status).

Trouble shooting

No power	<p>Check if the battery have enough power.</p> <p>Check if the power switch is not OFF.</p>
No sound from the Earphone	<p>Make sure the volume is not at the 0 level.</p> <p>Make sure the earphone is connecting with the player correctly.</p> <p>Make sure the earphone is clean.</p> <p>The damaged player may have some kind of noise or even cannot have audio output.</p> <p>Make sure your downloaded files are not damaged and that are supported by the player.</p>
Can not download File	<p>Check if the USB connection is ok.</p> <p>Check if there is available space in memory.</p>
Battery discharge quickly	<p>Decrease display backlight time</p> <p>Listening music at high volume may affect battery lifetime</p>

Specifications:

Model	BT 3280R MP4
Size	9,1 (H) x 4,1 (L) x 0,9 (D) cm
Display	1.8" 128*160 LCD display
USB transfers rate:	USB2.0 (High Speed)
Power supply	Built-in rechargeable battery 260mAh
Supported card	microSD memory card up to 64GB
Supported formats:	MP3 bit rate 8KBPS-320KBPS
	WMA bit rate 5Kbps-384Kbps
	OGG bit rate Q0-Q10 (20Kbps-499Kbps)
	FLAC bit rate L0-L8 (1000Kbps-1200Kbps)
	WAV
Lack fidelity	<+_0.11%
Frequency range:	20HZ-20KHZ
SNR	L: 96.1dB – R:95.3dB
MIC recording format	MP3/WAV
Supported picture format	JPG/BMP/GIF
Supported video format	AMV

Operate system :	Windows XP/Vista/7/8/10
Operate Temperature:	From -5 to 40 centigrade

Note: SPECIFICATIONS AND FEATURES MAY BE CHANGED FOR PRODUCT IMPROVEMENT WITHOUT PRIOR NOTICE

INFORMATION TO USERS OF DOMESTIC EQUIPMENT



Pursuant to Art. 25, Paragraph 1 of the Legislative Act N. 49 14th March 2014, "Implement of the Directives 2011/65 / EU and 2012/19 / EU concerning the reduction of the use of hazardous substances in electrical and electronic equipment, as well as waste disposal".

The crossed bin symbol on the appliance or on its packaging indicates that the product at the end of its useful life must be collected separately from other waste. The user must, therefore, dispose the equipment at the end of

its life to the appropriate electronic and electro technical waste centers, or return it to the retailer at the time of purchase of a new type of equivalent equipment, one by one.

Appropriate separate disposal for the subsequent start-up of the disused equipment for recycling, treatment and compatible environmental disposal helps to avoid possible negative effects on the environment and health and favours the re-use and / or recycling of the materials it is composed the equipment.

The illegal disposal of the product by the user involves the application of the penalties referred to in current laws.

Any rechargeable batteries or rechargeable batteries contained in the device must be disposed separately in the appropriate expired batteries bins.

Battery disposal



Disposal of expired batteries must take place at the appropriate recycling centers or according to local authority. Batteries in compliance with the 2013/56 / EC directive.